

Naming Opportunities

Front Atrium of the Hospital		\$100,000.00
Exterior Recognition of Orthopedic Hospital		\$1,000,000.00
Orthopedic Joint Camp Area		\$150,000.00
Orthopedic Hospital Patient Rooms	18 @ \$5,000 per room	\$90,000.00
Orthopedic Hospital Nurses Station	2 @ \$25,000 each	\$50,000.00
Orthopedic Hospital Break Room		\$5,000.00
Orthopedic Hospital Director Office		\$2,500.00
Interior Recognition of Operating Room Suites		\$500,000.00
Operating Room Pre/Post Outpatient Rooms	14 @ \$2,500	\$35,000.00
Operating Room Waiting Room		\$25,000.00
Interior Recognition of Birthing Center		\$500,000.00
Interior Recognition of Medical/Surgical Unit		\$500,000.00
Medical/Surgical Patient Rooms	18 @ \$5,000 per room	\$90,000.00
Medical/Surgical Nurses Station		\$25,000.00
Interior Recognition of ICU Suite		\$150,000.00
ICU Patient Rooms	5 @ \$10,000 per room	\$50,000.00
ICU Nurses Station		\$25,000.00
Interior Recognition of Adult Mental Health Hospital		\$500,000.00
Adult Mental Health Patient Rooms	8 @ \$5,000 per room	\$40,000.00
Adult Mental Health Nurses Station		\$25,000.00
Adult Mental Health Activity Room		\$7,500.00
Adult Mental Health Consult Room		\$5,000.00
Registration Waiting Room		\$25,000.00
Donor Board		\$200,000.00

2019 Foundation Capital Campaign



Award-Earning Care.



Take me to...

Labette Health



Dear Friends,

The Labette Health Foundation is proud to announce the “Take me to Labette Health” capital campaign to raise funds for the expansion and remodel of our main hospital campus in Parsons, Kansas. This is exciting news for southeast Kansas and the surrounding communities we serve. This is also part of a carefully orchestrated long term plan designed to continually improve and add new service lines to better serve you and your family.

We offer a wide array of services and we continue to look for new lines of service to make Labette Health a local, “one stop shop” for you and your family. With the changing times we must stay ahead of technology and maintain a modern and up to date facility for you, your family, and your business to receive excellent care. As one of only five level III trauma centers in Kansas, we are here for you when you need us-24 hours a day, 7 days a week.

Superior Patient Care

The certificates and awards we continue to receive are not easy to come by. They are the result of many hours of planning and the implementation of new systems and processes focused on patient safety and quality standards...all guided by an interdisciplinary team of dedicated physicians, nurses and other healthcare professionals working together with one goal in mind: superior patient care-*Centered around you.*

The Labette Health Foundation allows individuals, businesses and foundations to support the important work of healing. Your tax deductible donation can help expand and grow our main campus. Your gift to the Labette Health Foundation will be restricted to the Take Me to Labette Health campaign.

As you learn of our needs, our plans, and our commitment to continue serving southeast Kansas, join us in this exciting project. Please partner with us to expand our hospital and together we can create a legacy for healthcare in southeast Kansas.

Thank you in advance for all your support,



Robert Gibbs
Robert Gibbs, MD
Foundation Board President

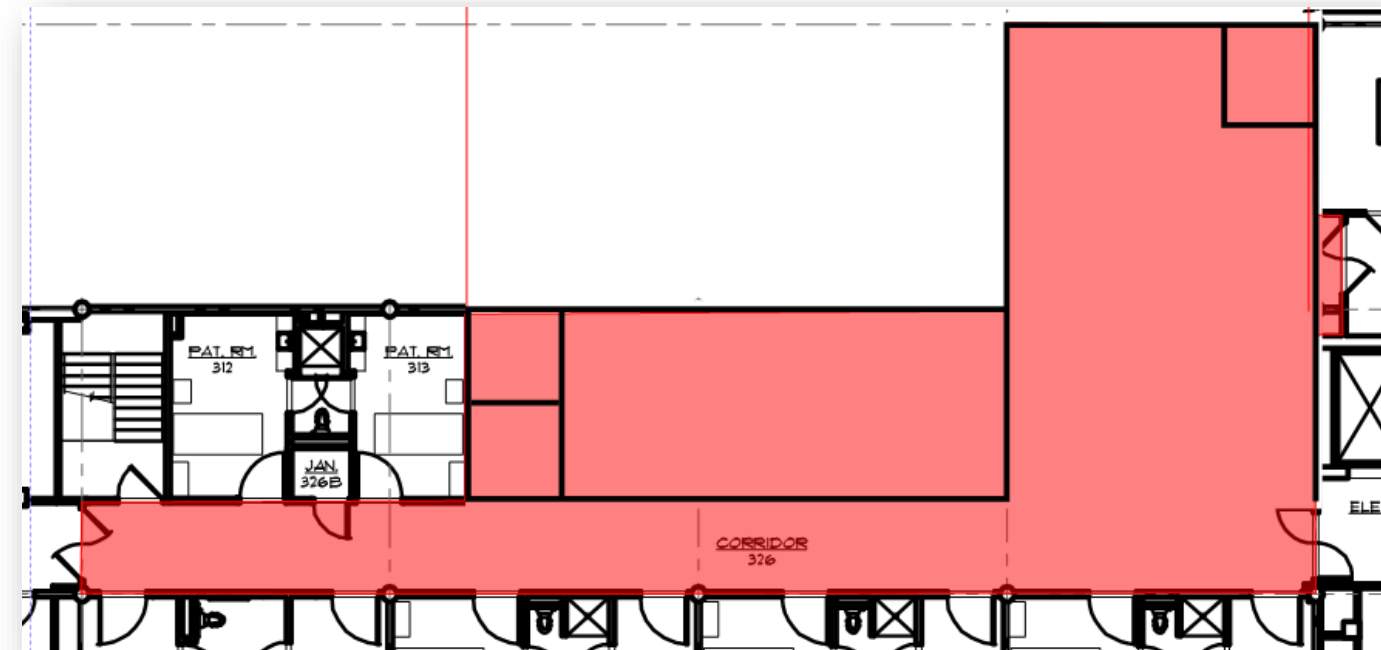


A+CV8
Anthony Vaughan
Foundation Executive Director

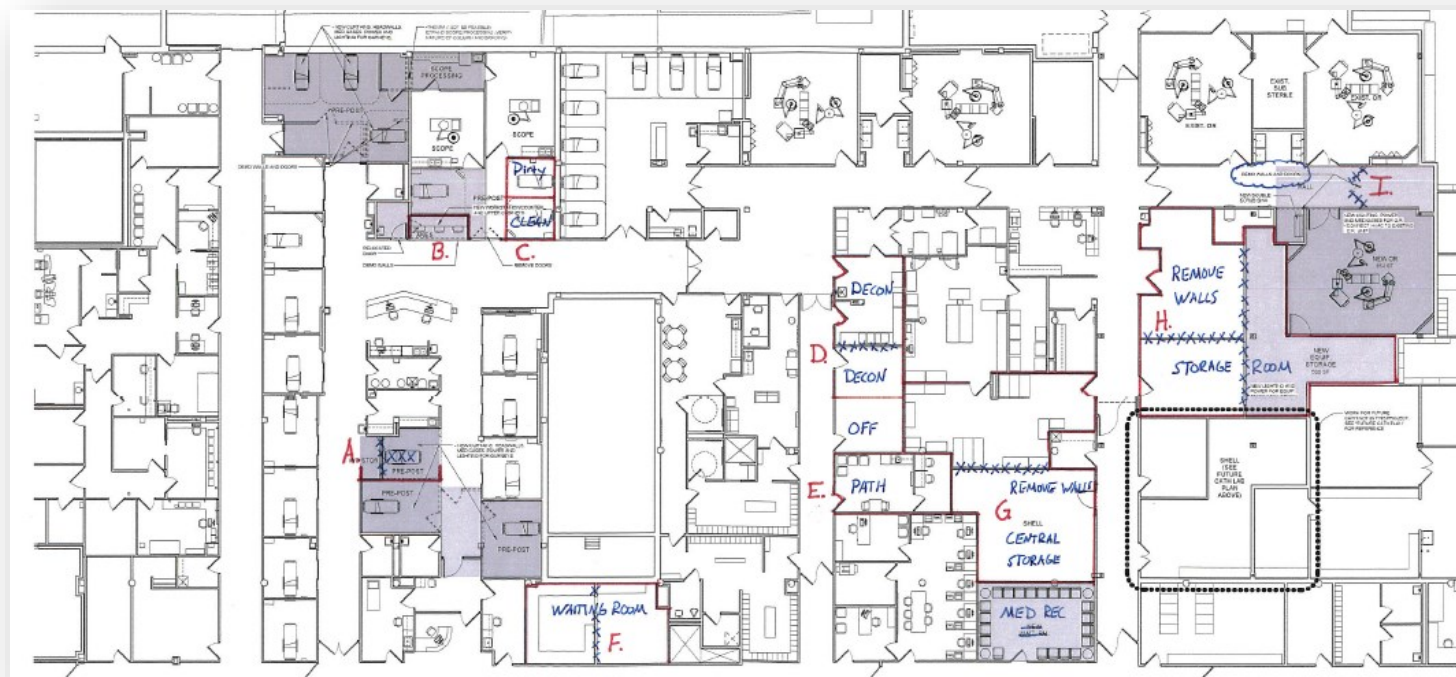


Perry Sorrell
Perry Sorrell
Board of Trustees President

Orthopedic Hospital



Operating Room



2017

Independence
Healthcare
Center opened.

2018

First Neuro/Spine
surgery was
performed

2018

Chanute Clinic &
Express Care
opened.

Independence
Women's &
Children's Clinic
opened.

2019

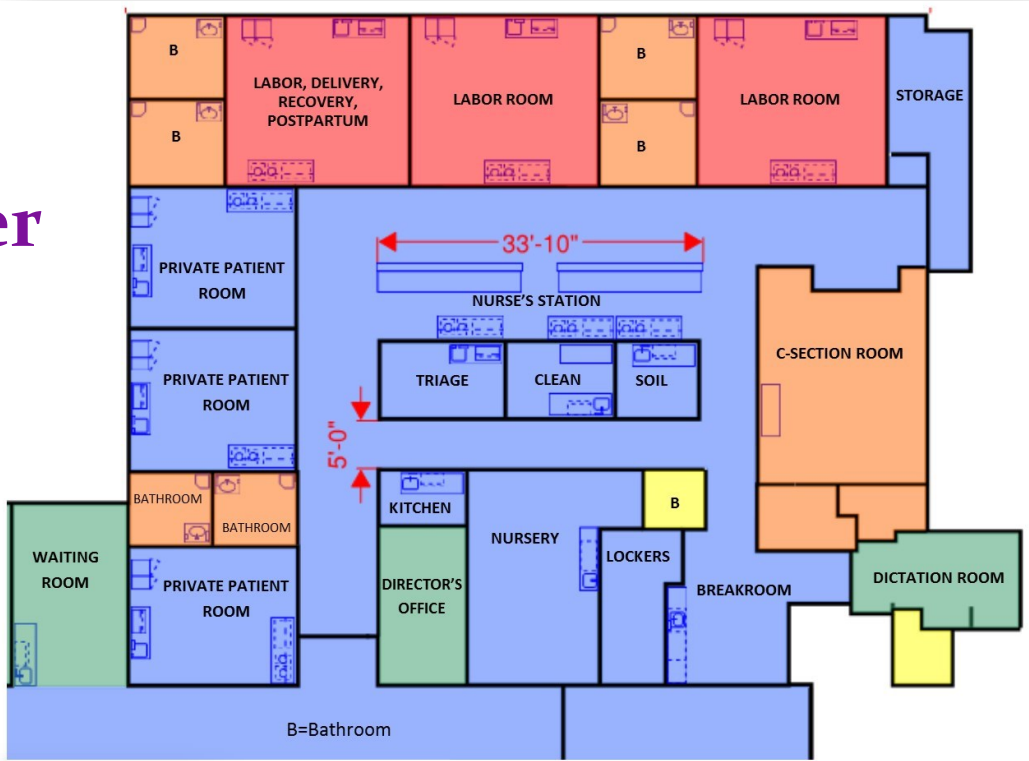
Coffeyville Clinic
opened.

Oswego Clinic &
Express Care
opened.

2019

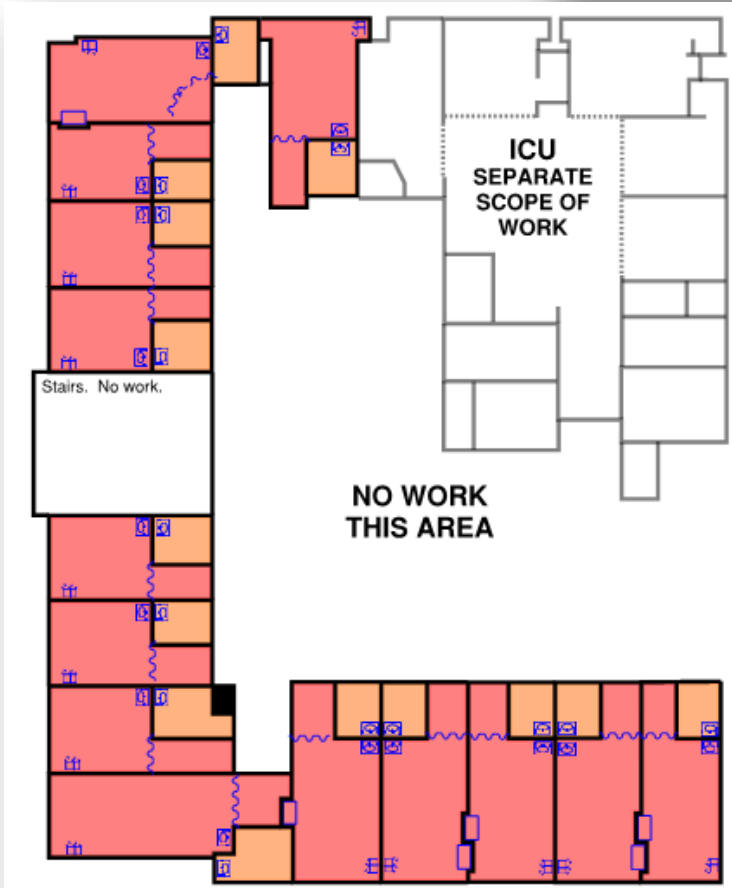
**TAKE ME TO
LABETTE HEALTH
CAPITAL
CAMPAIGN
BEGAN!**

Birthing Center



Labette Health, serving a six-county area since 1961, is a 99 bed licensed hospital that provides acute, intensive and inpatient rehabilitation services. Labette Health serves southeast Kansas with clinics in Altamont, Chanute, Cherryvale, Coffeyville, Erie, Independence, Oswego, Parsons and St. Paul, including an emergency department at the Independence Healthcare Center and four express care locations - Parsons, Chanute, Independence and Oswego.

Labette Health, renowned for its comprehensive healthcare services, state-of-the-art technology and skilled medical staff, has earned national recognition for patient safety. Labette Health has earned numerous quality awards by CareChex, including ranking in the top 10 percent of hospitals nationwide for patient safety and medical excellence as well as national recognition by Healthgrades and U.S. News &World Report for Knee Replacement, Leapfrog Grade “A” , and Blue Distinction Center+ for Knee and Hip Replacement.



Medical/Surgical (2 North) ICU



2011
The Bill & Louisa Wiener Therapy Garden was dedicated.

2014
First da Vinci robotic surgery was performed.

2015
Independence Clinic opened.
Independence Express Care opened.

2015
Broke ground for the new Independence Healthcare Center.

2017
Altamont Clinic opened.
Erie Clinic opened.

1913
Original hospital named Mercy Hospital was built by the Sisters of St. Joseph of Wichita.

1961
New 65-bed Labette County Medical Center opened. The last Mercy patient was dismissed nine days later.

1963
Jerry D. Lilley succeeded Robert E. Jones as hospital administrator, a post Lilley held until 1990.

1963
The Labette County Medical Center Auxiliary was founded.

1981
Group of Parsons physicians moved into an eight-doctor clinic on north side of hospital.



Whether it is an Emergency Room visit, a Home Health visit, or any other type of healthcare service, we hope you will ask to be taken or referred to Labette Health. By keeping our healthcare local or at least beginning our healthcare journey local, we better position southeast Kansas to sustain hospital services far into the future. We all live and work in an area where three hospitals have closed in the past four years, and it is through your support that we continue to grow to meet the needs of the communities that we serve in the face of these challenges.

At a recent local funeral service, I was tapped on the shoulder by a gentleman that said, “I want to thank you for what you have done for Independence.” I thanked him for his sincere gesture, but I replied, “Sir, thank you for what you and Independence have done for Labette Health and southeast Kansas. Without your support, we would not be able to continue to grow, maintain the only Level III Trauma Center, and maintain the highest quality rankings in the area.”

Based upon our outcomes and quality data **independently** reviewed and rated by such organizations as CareChex, US News and World Report, Leapfrog, Healthgrades, Centers for Medicare and Medicaid Services, and Blue Cross Blue Shield, Labette Health is one of the highest quality Hospitals in both Kansas and the United States. I say this not to be boastful, but to provide you the best reason I know to say – “Take Me to Labette Health.”

With the support of you and your families, Labette Health will continue to grow and expand to meet the future needs of southeast Kansas. We are planning two new clinics in Chetopa and Oswego, and we are planning a hospital renovation to include expansion of our Women’s Services and Orthopedics program. In closing, there is nowhere better to receive Orthopedic care in the state of Kansas than at Labette Health, so if you have an Orthopedic injury just say, “Take Me to Labette Health.”

Brian Williams, FACHE, FACMPE
President & CEO

2018 was the most profitable year in the history of the hospital with a net profit of \$4,900,775—representing a 6.5% net margin.

Since 2014, we have strengthened our balance sheet from an equity position of 43% in 2014 to 57% in 2018. Our day’s cash on hand has increased over the same period from 93 days in 2014 to 153 days in 2018. Finally, from 2014 to 2018 our total revenues have increased \$18,000,000.

While our financial operating results have been outstanding the past four years, we are equally, if not more proud of:

- Receiving a Leapfrog Grade “A” rating for patient safety
- Being selected by CareChex as a “Top 10% in the Nation” hospital on several measures
- Being selected in the top 3% of hospitals for “Orthopedic Care” by U.S. News and World Report
- Being selected by Medicare as a “Five Star Hospital” based upon our quality and outcomes
- Being selected as a Blue Distinction Center+ for Knee and Hip Replacement

Operation Indy—Neighbors Building Together for a Healthy Future

Following the Foundation’s successful capital campaign, the operations of Independence Healthcare Center began July 4, 2017. With two complete years of operation, Independence Healthcare Center has provided a positive contribution margin to the operations of Labette Health. To date, we have seen 13,596 patients in the emergency room, performed 18,106 outpatient hospital tests, admitted 326 observation patients and provided 39,002 clinic visits.



2019 PROJECT SUMMARY

Orthopedic Hospital (3 North)

- 18 private patient beds

Medical/Surgical Unit (2 North)

- Remodel of existing patient rooms

Intensive Care Unit (ICU)

- Renovation of unit

Birthing Center

- Complete renovation, including private rooms

Inpatient Adult Mental Health Unit

- 10 patient beds

Operating Room

- Addition of operating rooms

TOTAL ESTIMATED COST OF PROJECT:
\$18,200,000

To be financed through:

- \$8,200,000 of cash from Labette Health
 - \$4,000,000 in donor raised funds
- \$6,000,000 in long-term bond financing

1985

Labette County Medical Center Foundation was established by Mrs. Jane Ellis Hett.

1991

Broke ground for an expansion of a new ER, additional second-floor patient rooms and new ICU.

1996

Broke ground for new medical office building (BLDG D).

1997

Dialysis Center Building was donated by the Labette County Medical Center Foundation.

2003

With a bequest from Cleo & Roy Webster, The Webster Inpatient Rehabilitation Unit was dedicated.

2007

LCMC began operating as Labette Health. Shuttle buses were donated by the Foundation.

2008

Broke ground for the new 3-story medical office building (BLDG E).

2008

The Murland & Charlene Taylor Family Healing Garden was established.

2009

The Rector Diabetes Education & Resource Center was dedicated. The CORE was dedicated.

2009

Labette Health became Kansas’ first level III trauma center.